

Non-linear classifiers applied to EEG analysis for epilepsy seizure detection

Jesus Martinez-del-Rincon^b, Maria J. Santofimia^{a,*}, Xavier del Toro^a, Jesus Barba^a, Francisca Romero^c, Patricia Navas^c, Juan C. Lopez^a

^a*Computer Architecture and Networks Group, University of Castilla-La Mancha, Paseo de la Universidad, 4, Ciudad Real, Spain*

^b*Centre for Secure Information Technologies, School of EEECS, Queens University Belfast, BT3 9DT, UK*

^c*Hospital Regional Universitario Carlos Haya, Av. de Jorge Silvela, 8, 29010 Mlaga, Spain*

Abstract

This work presents a novel approach for automatic epilepsy seizure detection based on EEG analysis. The proposed solution exploits the underlying non-linear nature of EEG data. In this article, two main contributions are presented and validated: the use of non-linear classifiers through the so-called kernel trick and the proposal of a Bag-of-Words model for extracting a non-linear feature representation of the input data in an unsupervised manner. The performance of the resulting system is validated with public datasets, previously processed to remove artifacts or external disturbances, but also with private datasets recorded under realistic and non-ideal operating conditions. The use of public datasets caters for comparison purposes whereas the private one shows the performance of the system under realistic circumstances of noise, artifacts, and signals of different amplitudes. The obtained results prove the robustness of the proposed solution to more realistic and variable conditions. Moreover, the proposed solution has been compared to state-of-the-art works not only for pre-processed and public datasets but also with the private dataset. The mean F1-measure shows

*Corresponding author

Email addresses: j.martinez-del-rincon@qub.ac.uk (Jesus Martinez-del-Rincon), mariajose.santofimia@uclm.es (Maria J. Santofimia), Xavier.delToro@uclm.es (Xavier del Toro), jesus.barba@uclm.es (Jesus Barba), franciscaromerorespo@gmail.com (Francisca Romero), patricianavas@gmail.com (Patricia Navas), juancarlos.lopez@uclm.es (Juan C. Lopez)

a 10% improvement over the second-best ranked method including cross-dataset experiments.

Keywords: Classification algorithms, Non-linear classifiers, SVM, Bag of words, Wavelet, Epilepsy

1. Introduction

Epilepsy is a disease that affects approximately 1% of the world’s population Shoeb et al. (2004). This neurological disorder might cause a loss of consciousness, muscle jerks or, in the most severe cases, prolonged convulsions. Its effects
5 have a significant impact on the patients quality of life as well as other important social and economic considerations, due to health-care needs, premature death and/or loss of work productivity Organization (2016).

Epilepsy diagnosis is a tedious, expensive and time-consuming task, which is performed by highly trained professionals who examine EEG data in seeking
10 abnormal brain activity. Despite the great impact that epilepsy has on society, there are few computational systems or tools that support automatic analysis and categorization of EEG recordings. The lack of reliable systems for automatic epilepsy diagnosis is not casual. In contrast, several reasons appear to be responsible for this scarcity, such as the great variability found among indi-
15 viduals and the overlapping stages among seizure and non-seizure statesEchauz et al. (2008). This work proposes and analyses two expert systems for epilepsy diagnosis that exploits the non-linear separability of the data. More importantly, this paper demonstrate the expert-system performance under realistic and variable conditions, similar to the ones that would be found in a real hospital environment. For this reason, special emphasis has been made in this paper
20 to demonstrate the robustness of the solution regardless the training data.

The present work systems are based on EEG analysis and inspired by non-linear classifiers and the Bag-of-Words model Joachims (1997), which has been previously used in fields such as natural language understanding or computer
25 vision Cheng et al. (2010); Gilbert et al. (2009) to deal with multiple sources

of noise and variation. The goal is to analyze the behavior of both systems and study their suitability and robustness using datasets with different characteristics in terms of noise, signal attenuation, presence of artifacts, or the type of activity being recorded (ictal, inter-ictal, normal with artifacts, etc.). Furthermore, cross-dataset testing will be employed to ensure that the results are representative of the real expected performance. The accuracy of the results obtained by the proposed system is compared to the performance of a linear classifier and the state of the art. Our proposal outperforms the most representative and relevant state-of-the-art works and its performance is stable across datasets. Moreover, this proposal has been demonstrated to be computationally efficient.

2. Previous work

Many different approaches have been proposed for automatic seizure detection and epilepsy diagnosis, for the sake of simplicity, we will mention some of the most relevant but for a thorough analysis of the state of the art, please refer to Tsiouris et al. (2015); Alotaiby et al. (2014). The first acknowledged and widely used approach for automatic recognition of epileptic seizures based on EEG analysis was proposed in Gotman (1982, 1990) by Gotman. The approach presented in this work consists of quantitatively measuring the novelty of the EEG signal. Therefore, a continuous temporal analysis is performed that compares one epoch or EEG signal segment against a reference or background segment. Gotmans Monitor algorithm employs a set of rules for identifying and triggering seizures. The work of Wilson et al. in the Reveal algorithm Wilson et al. (2004) also relied on the analysis of EEG tendencies and a rule-based system to identify potential seizure scenarios. However, Wilson introduced analysis of frequency parameters.

Methods that combine time and spectral analysis of an EEG signal have showed an improvement in the success ratios for seizure detection in contrast to those that only focus on one domain. In this regard, the wavelet transform is

55 one of the most frequently used signal processing algorithms for EEG analysis
(see Faust et al. (2015) for a detailed summary of published research on EEG
signal feature extraction using DWT).

As a common feature of all of the current approaches, after characterizing
the signal either in time or frequency, a decision must be made as to whether
60 the EEG signal presents the characteristics of a seizure or not. This decision
is supported by the use of a classifier that has as inputs several signal features
that are computed from the EEG data after the pre-processing stage. There is a
variety of methods that have been used to characterize the pre-processed EEG
record: entropies Acharya et al. (2015), energy distribution Omerhodzic et al.
65 (2013); Orhan et al. (2011); Patnaik & Manyam (2008); quantitative statistical
variables such as the mean, standard derivation, variance, inter-quartile range
and other measurements Pippa et al. (2015); autoregressive models Atyabi et al.
(2016); or independent component analysis Siuly & Li (2015), just to name some
of the most promising approaches.

70 The type and number of such features has a direct impact in the behavior
of the system. Thus, it is necessary to select the most appropriate techniques
to maximize the recognition rates. The work in Upadhyay et al. (2016) carries
out a comparative study of feature ranking techniques.

Regarding the use of non-linear classifiers the following works propose the
75 analysis of different parameter from the point of view of their significance in
distinguishing different types of EEG signals (normal, ictal, interictal). The use
of Higher Order Spectra (HOS) is studied in Chua et al. (2008) Chua et al. (2011)
to conclude that the analysed parameters are statistically significant therefore
appropriate for the classification of EEG signals. The use of Recurrent Quantifi-
80 cation Analysis (RQA) Acharya et al. (2011b) parameters yields an accuracy
result of 95.6% when run with SVM classifiers. The work in Martis et al. (2013)
proposes the use of a novel method, as it is the Intrinsic time-scale decom-
position (ITD), to compute features for the automated classification process.
Accuracy rate of 95.67% was reported in this study. The work in Acharya et al.
85 (2011a) report the use of Higher Order Cumulant features. This study reports

an accuracy rate of 98.5% when used with SVM classifiers.

Regarding classification strategies, the existing literature mainly reveals two different approaches in EEG analysis for automatic seizure detection: Artificial Neural Networks Alfaro-Ponce et al. (2016); Omerhodzic et al. (2013); Husain & Rao (2012); Orhan et al. (2011); Patnaik & Manyam (2008); Tzallas et al. (2007); Bao et al. (2008); N & Thanushkodi (2009) and linear classifiers such as Support Vector Machine Direito et al. (2014) or k-means clustering Janjarasjitt (2010). Alternatively, other machine learning algorithms, such as Genetic Programming Bhardwaj et al. (2016), have also been proposed in this field.

However, these previous techniques have been evaluated in simple datasets such as the University of Bonn dataset in which only one type of variation or activity modality is present, which explains the high accuracy rates achieved by simple and linear methods. Furthermore, the methods are retrained for each dataset and parameters have been manually tuned for the testing set rather than using automatic optimization techniques as in other fields Valipour (2016); Valipour & Singh (2016); Yannopoulos et al. (2015); Valipour (2012b,a). This results in overfitting to the specific dataset, which means that a significant performance drop is expected when testing in a different dataset or under more realistic and challenging scenarios with different activity variations and noise presence.

Table 1 summarizes a comparative analysis of the most relevant works of the state of the art for automated EEG analysis for epilepsy diagnosis.

3. Background

3.1. Wavelet transforms

The analysis of EEGs for seizure detection is mostly performed in the time and frequency domains. The simplest and most straight-forward technique, as performed by neurophysiologists, is the visual inspection of the EEG time series, which does not require any additional manipulation of the EEG data. Additional information in the time domain can be obtained by means of simple calculations

Table 1: Summary of most relevant state-of-the-art works for automated EEG analysis

Reference	Features	Classifier	Accuracy(%)
Chua et al. (2008)	HOS features	GMM	93.3
Acharya et al. (2011b)	RQA	SVM	95.6
Martis et al. (2013)	IDT	SVM	95.67
Acharya et al. (2011a)	HOC	SVM	98.5
Polat & Güneş (2007)	FFT	Decision Tree	98.72
Guo et al. (2009)	Relative Wavelet Energy	ANN	99.6
Wang et al. (2012)	DWT	ANN	99.5
Janjarasjitt (2010)	Wavelet-Based Scale Variance	k-means	99.0
Husain & Rao (2012)	DWT	ANN	98.2
Fathima et al. (2011)	DWT	Linear classifier	99.8
Chen (2014)	DTCWF	Nearest Neighbor	100
Übeyli (2010)	Burg AR	least squares SVM	94.83

115 on the time series, such as the average, median, and standard deviation values. Nevertheless, it is generally more interesting to analyze transients and changes in the EEG signals by means of calculating the rate of change, moving average, autocorrelations, and autoregressions.

The frequency content of the EEG signals provides very valuable information, but it is difficult to extract from the visual analysis in the time domain. 120 Moreover, certain manipulations and signal processing techniques, such as filtering, convolution operations, and Fourier analysis, are better addressed in the frequency domain.

Wavelet transforms provide the most suitable tool for time-frequency analysis of non-stationary and transient signals. They can remove noise and reveal 125 trends, similarities, repeated patterns and discontinuities, to ultimately outline the occurrence of certain events of interest. The wavelet transform, in contrast to Fourier analysis, consists of the decomposition of the original signal into scaled (stretched or compressed) and shifted versions of the original wavelet waveform, also known as the mother wavelet. The wavelet transform behaves as a frequency 130 microscope that provides detailed information about different frequency

bands as well as temporal information. Computationally efficient algorithms of the Discrete Wavelet Transform (DWT), based on the multi-resolution analysis concept, provide the decomposition of the original signal into low-frequency approximations and high-frequency detailed coefficients. Iterative decompositions of the resulting low-frequency approximations provide local detail in certain frequency bands in the time-frequency domain. The DWT decomposition is illustrated in the following example (Figure 1), in which an EEG signal that contains an epileptic seizure is analyzed¹. A fourth-order Daubechies with five levels of decomposition is shown. The approximation A5 and different levels of detail, from D1 to D5, show the frequency content of the different frequency bands of interest.

The Wavelet transform has been employed in several previous studies in the field of epilepsy analysis and is used for the extraction of features from EEG data. Table 2 compiles some of the references and the type of Wavelet and number of decomposition levels employed. The fourth-order Daubechies Wavelet with 4 to 6 levels of decomposition is the most common choice found in the literature.

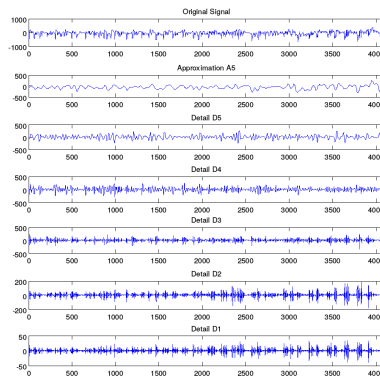


Figure 1: The 4th-order Daubechies 5-level decomposition of an EEG signal that contains an epileptic seizure

3.2. Bag of Words

The Bag-of-Words (BoW) model was originally proposed in the field of Natural Language Understanding Joachims (1997). However, this field is not the only field in which this technique has succeeded. In contrast, it has also been

¹This signal corresponds to one channel of the E Set of the University of Bonn dataset that records epileptic seizure activity.

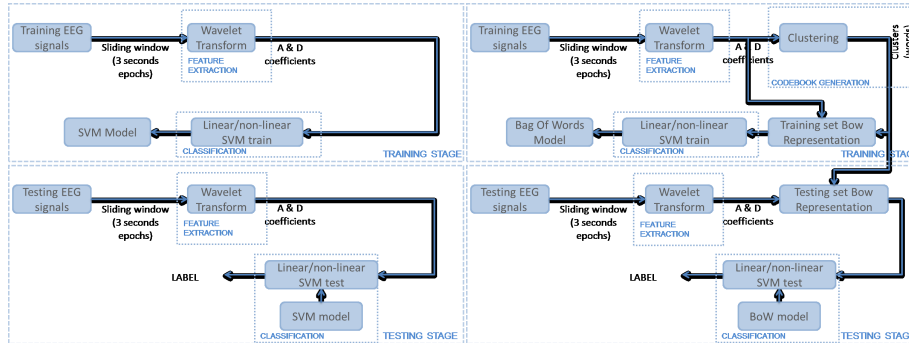
Table 2: Wavelet transform implementations in previous studies

Reference	Wavelet	Decomposition levels
Omerhodzic 2010Omerhodzic et al. (2013)	4th order Daubechies	5
Janjarasjitt 2010Janjarasjitt (2010)	25th order Daubechies	5
Adeli 2003Adeli et al. (2003a)	4th order Daubechies Harmonic Wavelet	6
Fathima 2011Fathima et al. (2011)	2nd order Daubechies	4
Husain 2012Husain & Rao (2012)	4th order Daubechies	4
Ataee 2006Ataee et al. (2006)	4th order Daubechies	4–6
Orhan 2011Orhan et al. (2011)	2nd order Daubechies	6
Subasi 2007Subasi & Erelebi (2005)	4th order Daubechies	5

applied to the computer vision field, for image recognition, in which good performance rates have been achieved Cheng et al. (2010); Gilbert et al. (2009).
 160 Image recognition is not very different from the pattern recognition tasks that are required for seizure detection based on EEG signal analysis and, in fact, this technique has been explored for biomedical time series classificationWang et al. (2013). They are both digital signals in which the salient points of the signal
 165 serve to identify a sought-after pattern.

The working hypothesis of this study is, therefore, that with some adjustment, the same approach that is applied to Natural Language Understanding and Computer Vision can be applied to epilepsy seizure detection. The good results obtained in these fields of knowledge can also be reproduced in the field
 170 of EEG analysis for seizure detection. To prove this working hypothesis, a BoW-inspired system must be implemented and tested to determine whether the obtained accuracy rates improve on the state-of-the-art results.

Essentially, the first step of the BoW model consists of calculating an attribute-value representation, in which each word that appears in the document has an
 175 associated value that reflects the number of times the word appeared in the text. In the context of EEG analysis, each word is considered to be a feature, and each document is represented by means of a feature vector. A document is therefore described by means of the word distribution, which is used to characterize the type of content of that document.



(a) using an SVM classifier method and (b) implementing a BoW-inspired method

Figure 2: Proposed EEG classification frameworks

180 The required adjustments are intended to adapt the original approach, in which words are considered to be representation units, to the approach proposed here, in which EEG signal segments, or epochs, are equivalent to words in a document. Similar to the role that word order plays in documents, the epoch order can also be considered to be irrelevant and is therefore overlooked.

185 4. Methods

This section describes the characteristics of the EEG non-linear classifiers proposed here. Figure 2 outlines the stages that are involved in the process of signal characterization and categorization for both systems: an SVM classification framework and a BoW-inspired methodology that extends the previous pipeline. Both methods have most of their stages in common. The difference between the SVM method and the BoW-inspired one is that the codebook generation stage is omitted for the SVM. The classifier is therefore trained with the feature vector set computed after applying the wavelet transform decomposition.

195 From the seizure detection viewpoint, the process of codebook generation consists in identifying the different codewords appearing in the different EEG channels of a given record. Therefore, codewords are the different clusters in which the feature vectors characterizing EEG channels can be grouped in. After

having generated the codebook, the next step consists in obtaining the histogram that characterizes the EEG signal channel. In order to do so, the proposal made here resorts to clustering the feature vector in the optimum number of clusters in which these data can be grouped in, and then, measuring the distance to each of the computed clusters. The next step consists in training the classifier using examples, with segments corresponding to normal activity and those others corresponding to epileptic activity. The adopted learning strategy uses a Support Vector Machine (SVM) classifier to compute the final classification model.

For both systems, different non-linear classifier kernels have been applied to compute their accuracy rates. The different kernels are also described in section 4.3.1. Several stages are common to both processes and both systems, as seen from Figure 2, such as the signal segmentation, the wavelet transform stages and the adopted learning strategy based on Support Vector Machine (SVM) classifiers. The stages represented in the figure are discussed in detail in the following subsections.

These different stages are grouped into two major processes: training and testing. First, a learned model is trained using examples of segments that correspond to both normal and seizure activity. This model is then used in the testing phase to classify a new, unseen signal.

In this framework, it is important to note that each individual signal channel is considered in isolation and is split into 3-second epochs, with a window overlap of one second between epochs (see Figure 3). The accuracy rate therefore refers to the

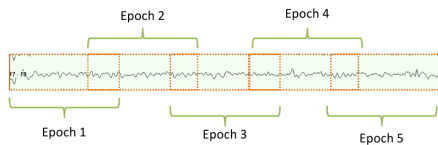


Figure 3: Signal segmentation into 3 second epochs

number of epochs that can be correctly identified. This approach is the typical strategy used in the literature Fathima et al. (2011); Janjarasjitt (2010).

Table 3: Decomposition levels and frequency bands

Decomposed signal	Frequency bands	Decomposition Level
D1	43.4 - 86.8	1 (noises)
D2	21.7 - 43.4	2 (gama)
D3	10.8 - 21.7	3 (beta)
D4	5.40 - 10.8	4 (alpha)
D5	2.70 - 5.40	5 (theta)
A5	0.00 - 2.70	5 (delta)

4.1. Feature extraction

Even though using the raw EEG signal channels as input for the classifier is possible, the use of these full segments is a poor representation of the input data. This drawback is due to the large amount of redundant information that is contained in an epoch and its high dimensionality, which make the learning and classification task more difficult. It is therefore necessary to find a better representation. Feature vector computation is the process of identifying the salient features of a signal segment and translating them into a quantitative set of features that characterize that segment. The process of computing these quantitative values is not unique; moreover, the performance and accuracy rate of the process can be greatly affected by the method by which these characterizing values are selected and obtained.

This work proposes the use of a wavelet decomposition approach to minimize the amount of information that is required to characterize a segment as well as to magnify those signal aspects, or features, that are related to the presence of epileptiform activity.

The wavelet transform is used to decompose the original signal into frequency sub-bands as listed in Table 3.

Among the different wavelet transform types and decomposition level configurations, this work made use of the Daubechies wavelet [Omerhodzic et al. (2013)]. The clinically and physiologically relevant activity of the brain is framed

in the frequency range of 0.3 to 30 Hz. More specifically, brain activity can be categorized into a set of typical wave types, each of which lies within a predetermined frequency band.

250 The theoretical foundation for identifying those frequency bands out of the different decomposition levels is derived from Nyquist’s theorem. The frequency bands of each decomposition level are comprised in the range stated by $[f_m/2 : f_m]$, such that $f_m = f_s/2^{l+1}$, where f_s is the sampling rate frequency and l is the level of decomposition Omerhodzic et al. (2013).

255 Given the dominant frequency components of the brain signal the number of decomposition levels is set to five Adeli et al. (2003b). The Daubechies 4 (db4) wavelet transform is applied, decomposing the signal into details D1-D5 plus one final approximation A5, as listed in Figure 4. The first step in computing the feature vector for a given signal segment therefore consists of applying the Daubechies wavelet transform, with five levels of decomposition.

260 However, the number of values that correspond to these coefficients is still too large for the purposes of a feature extraction process, which could be affected by the curse of dimensionality. For that reason, rather than using all of the coefficient values, the coefficient set dimensionality is reduced by selecting a small number of coefficients that is believed to be the most characteristic set. Based on Kandaswamy et al. (2004); Gotman (1990), four statistical operations are performed over the original coefficient value set, and the following values are selected: the maximum value; the minimum value; the mean value; and the standard deviation value.

275 The resulting feature vector $x_i \in \mathbb{R}^{24}$ is composed of 24 values, with four values for each of the six wavelet coefficient sets that correspond to the different

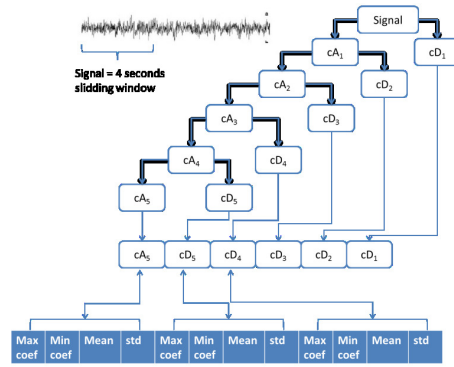


Figure 4: Signal decomposition using the DWT and feature extraction

decomposition bands. A visual description is depicted in Figure 4.

4.2. Bag of Words feature representation

280 BoW is proposed in this paper as one of the main novelties in the EEG analysis field. BoW has shown its excellent properties in the fields of computer vision and text analysis to automatically learn and extract discriminative features in complex data, where manual feature selection or manually design features are not possible or provide little discriminative properties. This is largely the case
285 of EEG where the interesting neural activity can be difficult to describe, may appear in many different varying shapes or may be largely hidden by noise. Features extracted from the EEG signals in the literature are largely based on simple statistics, being wavelet features one of the most advance techniques. In this sense, BoW can provide a relevant framework to the field to improve the
290 current state of the art.

This subsection describes the processes of clustering and codebook generation that are involved in the BoW-inspired system. From the BoW perspective, EEG signals play the role of a text document in which each signal segment, quantized as a feature vector, can be characterized as a set of words in a specific
295 configuration. The aim of this new feature representation is to better address the non-linear nature of the data by mapping to a new representation or space where the classifier can be better applied. The BoW representation can be therefore understood as a non-linear transformation function.

4.2.1. Codebook generation

300 The first step is the generation of words to be used to represent the initial signal. This process is called codebook generation and consists of identifying the most common and repetitive patterns, or *words*, that appear in a set of signals, or *document*. Thus, each word represents a frequent and characteristic spectro-temporal feature that can be used to codify our signal, to obtain the
305 most representative groups. Under this definition, words are the different cluster centers c_k in which the feature vectors of the EEG segments can be grouped,

and the codebook C , or *vocabulary*, is the entire set of words that can appear in the whole dataset.

Clustering

310 Clustering the feature vectors according to their common features allows us to obtain those representative words that repeat over the dataset. This clustering also removes undesired feature value variations due to noise in the signal because each group will allow a certain variability or deviation from the cluster center. At the same time, the outlier segments that are not very representative
315 will be filtered because they will not have sufficient critical mass to compose their own cluster. This process can be considered equivalent to the elimination of the *typos* from the text.

Two different clustering techniques were tested in this paper, and an empirical comparison is presented in the results section. No assumption regarding the
320 number of clusters, their allowed variability or the memberships of the feature vectors to the hypothetical words was made.

The first clustering approach used in this work is *k-means* clustering Kanungo et al. (2002). In this algorithm, initial seeds for each of the K clusters are initialized to a random sample in the dataset. Then, an iterative process is
325 applied to refine their positions and characteristics until convergence is achieved. At each iteration, each sample, defined by its feature vector $x_i \forall i \in \text{dataset}$, is assigned to the closest cluster, and the cluster center c_k is recalculated as the average of all of the samples assigned to it.

$$c_k = \frac{1}{n_k} \sum_{i=1}^{n_k} x_i \quad (1)$$

where n_k is the number of data samples that correspond to cluster k .

330 In contrast to previous work Gotman (1990), in our implementation, the number K of clusters is not predetermined beforehand but is calculated for each new training set under consideration. The implemented approach is intended to maximize the distances among the clusters, the *inter-class distance*, while minimizing the distance between the elements that are inside a cluster, the

335 *intra-class distance:*

$$Interclass(K) = \sum_{k=1}^K \sum_{i=1, i \neq k}^K \|c_i - c_k\|^2 \quad (2)$$

$$Intraclass(K) = \sum_{k=1}^K \frac{1}{n_k} \sum_{i=1}^{n_k} \|x_i - c_k\|^2 \quad (3)$$

To accomplish this goal, we predefine a maximum number of clusters, which ranges from 1 to 8 clusters, and we evaluate the optimization function for each of the considered numbers of clusters:

$$\arg \max_x \left\{ \frac{Interclass(K) - Intraclass(K)}{\max(Interclass(K), Intraclass(K))} \right\} \quad (4)$$

However, although k-means works well with isolated and compact clusters
 340 Jain et al. (1999), its performance decreases for a more complex clustering space. In addition, another disadvantage of the k-means algorithm is its stochastic initialization, which results in a high sensitivity to the selection of the initial seed. As a result, the clustering can converge to a local minimum of the optimization function if the initial partition is not properly chosen Jain et al. (1999).

345 To obtain a more robust grouping, a second clustering algorithm has been implemented and tested, based on the expectation–maximization (EM) algorithm McLachlan & Krishnan (2007). EM is an iterative methodology that allows finding the most likely estimates of parameters in statistical models. An EM iteration alternates between performing an expectation (E) step, which
 350 creates a function for the expectation of the log-likelihood as evaluated using the current estimate of the parameter k , and a maximization (M) step, which re-computes the parameter k that maximizes the expected log-likelihood found in the E step. This framework allows us to estimate and fit a Mixture of Gaussian (MoG) ϕ to our data x and calculate the associated parameters, the mean and
 355 covariance c_k , \sum_k , while minimizing the error. The minimization of the error is equivalent to maximizing the probability of expressing our data as a function of

the MoG.

$$p(x|\phi_k) \propto e^{-(x-c_k)^T \cdot \Sigma_k^{-1} \cdot (x-c_k)} \quad (5)$$

$$\phi = N(c_k, \sum_k) \quad (6)$$

In our approach, the number of clusters k is automatically learned during the clustering process by applying the Figueiredo-Jain GMM automatic estimation
360 Figueiredo & Jain (2002).

The strength of EM is that it can derive elliptical clusters (Gaussians) instead of spherical clusters that are estimated by k-means, and thus, it is more general and versatile when adapting to complex clustering spaces. Moreover, by integrating the automatic estimation of the number of clusters K in an iterative
365 process, not only the computational cost is reduced by avoiding repetitions of the clustering process a number of times but also the sensitivity to the stochastic initialization is removed.

The resulting vocabulary C will be the set of cluster centers that result from clustering the training set:

$$C = \{c_k\}_{k \in K} \quad (7)$$

370 in the case of k-means clustering, or by their centroids and their covariances:

$$C = \{c_k, \sum_k\}_{k \in K} \quad (8)$$

in the case of the EM algorithm.

4.2.2. Bag-of-Words representation

Once the vocabulary has been defined, the next step consists of redefining the feature vectors, which are originally composed of statistical values derived
375 from the wavelet decomposition coefficients, as a function of our vocabulary. This codification or quantization process generates a new descriptor, which is composed of words or *bag of words* and is finally fed into the classifier.

The new chosen descriptors represent the feature vector in terms of its distance to each of the words or cluster centroids. Since clusters are characterized differently depending on the applied clustering technique, two different distances were used: Euclidean distance for k-means clusters and Mahalanobis distance, for the EM clusters.

After the generation of the descriptor, the aforementioned feature vector of 24 values is now reduced to a new vector whose dimensionality depends on the optimum number of clusters for that specific signal. This arrangement can be seen as a non-linear transformation of the data.

4.3. Classification

Finally, the chosen feature representation, either the statistical values that result from wavelet decomposition or the BoW representation, are fed into a classifier that distinguishes among the different classes of samples. In our seizure detection problem, this classification is performed to distinguish normal and seizure EEG signals, and thus, a binary classifier is used (normal/epileptic). In our implementation, an SVM paradigm has been used Vapnik (1995); Janjarasjitt (2010); Kıymık et al. (2005). The choice of SVM in comparison with more traditional approaches, such as regression, neural networks and discriminant analysis (DA) Ripley & Hjort (1995), is supported by the reported advantages of the SVM Auria & Moro (2008): it does not require regularity in the data and thus can be applied to data that follow an unknown distribution; it delivers a unique solution because the optimality problem is convex in contrast to neural networks; it can be easily extended to non-linear non-parametric problems by replacing the linear kernel; it scales relatively well to high-dimensional data; and the trade-off between the classifier complexity and error can be controlled explicitly.

To classify a new test descriptor, the SVM should be already trained in a supervised mode with a training set that is composed of both positive and negative examples of normal and epileptic EEGs. As an output of the training phase, an hyperplane that is capable of separating the two classes with the

maximum margin, called the maximum-margin hyperplane, is obtained. The position of a new test descriptor with regard to this hyperplane will be the
 410 criterion for assigning it an identity as normal or epileptic.

4.3.1. Non-linear classification

For linear data, a hyperplane can be used to split the data. However, the assumption of linearity is often wrong (see Figure 5). In these cases, the dataset is inseparable in a linear space, and the classification fails. Although the deci-
 415 sion of taking a linear classifier is supported by the literature Gotman (1990); Orhan et al. (2011), where little attention has been paid to the classification technique to be applied, and linear classifiers have reported excellent results in EEG analysis, our working hypothesis about the non-linearity of the data will be evaluated by proposing the usage of non-linear SVM.

An extension of SVM was developed Husain & Rao (2012) to solve non-
 420 linear problems by the “kernel trick”. Given a training set $F = \{f\{x_i\}, y(x_i) \in \{-1, 1\}\}_{i \in dataset}$, where f is the BoW descriptor that corresponds to the training sample i and y is its class, this methodology applies a kernel function K to the descriptors, which maps them into a higher dimensional non-linear space by
 425 means of a non-linear function φ .

$$f(x), f(x') \leftarrow K(f(x), f(x') = \varphi(f(x)), \varphi(f(x'))) \quad (9)$$

In this new space, the data are linearly separable, and the SVM framework can be applied. This process is illustrated in Figure 5.

Different kernel functions can be applied to obtain the best possible transformation, and even a function that is personalized to the data can be used. Among
 430 the most common transformations are Cristianini & Shawe-Taylor (2000).

Polynomial of order d :

$$K(f(x), f(x')) = (f(x) \cdot f(x'))^d \quad (10)$$

$$K(f(x), f(x')) = (f(x) \cdot f(x') + 1)^d \quad (11)$$

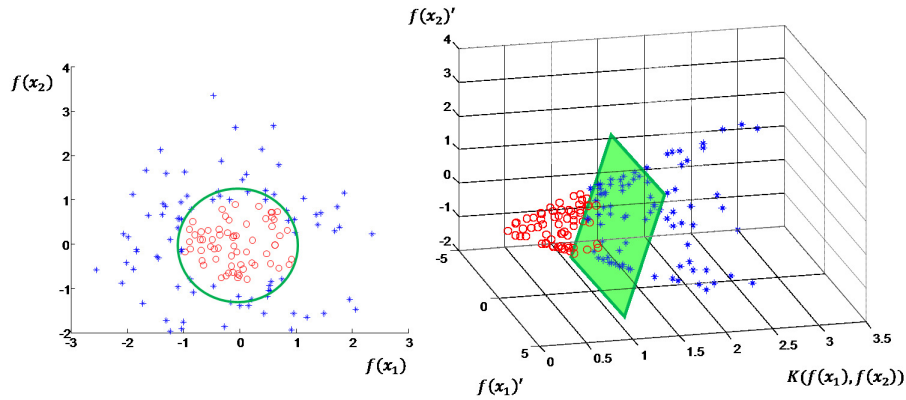


Figure 5: Non-linearly separable data (left) and its mapping into a linearly separable space through a non-linear kernel (right)

Gaussian Radial Basis Functions (RBF):

$$K(f(x), f(x')) = \exp\left(\frac{-\|f(x) - f(x')\|^2}{2\sigma^2}\right) \quad (12)$$

Perceptron multi-layer:

$$K(f(x), f(x')) = \tanh(\tau \cdot f(x) \cdot f(x') + c) \quad (13)$$

5. Results

This section describes the results that were obtained from testing the proposed system in three different datasets, which encompass situations with artifacts, different noise levels, highly attenuated signals and different activity variations. This section is intended to evaluate both types of systems under different circumstances, to determine the system that better suits the characteristics of a real scenario, and to compare it against the state of the art.

The proposed system has been implemented in Matlab, using the `gmmbayestb-v1.0`² for automatically learning the number of clusters based on the Figueiredo-

²<http://www.it.lut.fi/project/gmmbayes/doc/gmmbayestb-v1.0/gmmbayestb-v1.0/>

440 Jain GMM automatic estimation Figueiredo & Jain (2002). Additionally, we have employed the Matlab support for the SVM classifier and its different kernels.

5.1. EEG Data

Different datasets have been used in this work for training and testing purposes. First, the system was trained using the data described in Andrzejak et al. (2001), which is an open-access dataset made available by the University of Bonn. This dataset comprises a series of *clean* EEG signal channels that were recorded from both healthy and epileptic patients during ictal and inter-ictal periods. It is organized into five different sets, which are labeled from A to E. The A set records eyes opened and healthy patient activity, and the B set records the activity with eyes closed and healthy patients; the C set records inter-ictal activity from the healthy part of the brain, the D set records also inter-ictal activity but from the epileptic hemisphere of the brain, and finally, the E set records epileptic seizure activity. This work concentrates on sets A and E for learning by example, following a similar procedure as in other approaches in the literature Janjarasjitt (2010); Fathima et al. (2011). Each set contains 100 individual channels of 23.6 seconds, at a sample rate of 173.6 Hz. This dataset is an artifact-free dataset, which was recorded with a 128-channel amplifier system. Each dataset set records the activity of 5 different patients. In total, sets A and E contain a total of 1200 segment each, considering here 3-second segments. Half of these segments, randomly chosen, has been used for the codebook generation as well as for the SVM classifier model training.

Initially, the same University of Bonn dataset was used for testing using the remaining 50%. In addition, to obtain accurate results that are closer to a real scenario, where the system cannot be retrained for each new environment or patient, two other datasets are used as cross-dataset evaluation. The testing stage is extended to additional datasets that were not considered during the training stage or adapted to them. This allows us to obtain a more reliable evaluation of the real performance of the method. Moreover, it is expected that

470 these datasets contain different variations, noise and artifacts from the ones used
for training.

This work therefore resorts to a second only-testing dataset, which was made
available by the Epilepsy Center of the University Hospital of Freiburg, Germany
Winterhalder et al. (2003). This dataset records data from 21 patients who
475 suffer from medically intractable focal epilepsy. The data are labeled according
to the type of activity they record, which conforms to our set of labels I and
J. Moreover, each labeled activity is stored in a single file in which the signal
channels are differentiated. For each patient, this dataset provides records of
2-5 hours of ictal activity, sampled at a frequency rate of 256 Hz. We have
480 employed a reduced version of the dataset that records 3693,2 seconds of ictal
activity. It should be highlighted that this dataset contains artifact-free data
that were recorded from intracranial sensors.

Finally, a third dataset is also used for testing exclusively. The purpose of
this third only-testing dataset is to consider real EEG data that was recorded
485 from non-ideal environments in which there were numerous artifacts and at-
tenuated signals. Such factors are missing in the two previous datasets. This
last source of EEG data used in this work comes from the Hospital Regional
Universitario Carlos Haya (HRUCH) Malaga, Spain. EEG data were recorded
with XLTEK Neuroworks at a sampling rate of 512 Hz, although the signals are
490 band-pass filtered in the range of 2 to 200 Hz. This dataset is comprised of four
sets, labeled F, G, H, and K (to continue with the University of Bonn nomencla-
ture). The F set records the activity of a healthy patient, although with many
artifacts (due to cable disturbances and blinking). The G set records inter-ictal
activity, also with many blinking artifacts. These two sets are sampled at a fre-
495 quency of 511.99 Hz. The H set records a partial seizure, recording from both
the healthy and the epileptic part of the brain. The seizure takes place at the
left temporal lobe of the brain. The data were sampled at a frequency of 200
Hz. The K set records a tonic-clonic general seizure, also downsampled at 200
Hz. These three sets sum to a total of 277,71 seconds of recording.

500 Because of the many artifacts and attenuated signals, the HRUCH dataset

Table 4: Datasets used in this work

Set label	Source	Number of segments	Time in seconds	Label
A	University of Bonn	600	11,8	1
B	University of Bonn	1200	23,6	1
C	University of Bonn	1200	23,6	1
D	University of Bonn	1200	23,6	1
E	University of Bonn	600	11,8	2
F	HRUCH	345	7,61	1
G	HRUCH	5829	125,60	1
H	HRUCH	894	39,5	2
I	Freiburg	4431	3600	2
J	Freiburg	1920	93,2	2
K	HRUCH	2309	105	2

can be considered to be the most complex dataset, and it can provide a clear idea of how good is the performance of the proposed system outside of the lab, in a real environment. The data, as provided by the HRUCH dataset, are the type of data that a framework for seizure detection will be required to address. Table 4 summarizes the most relevant features of the sets used for testing purposes.

In summary, out of the 21728 segments of 3 seconds used in this work, 600 have been used for training purposes (half of the A and E sets). For those used for testing, 10374 segments corresponds to normal activity and 10154 segments to epileptic activity. The system performance has been tested with a total amount of 4065,31 seconds, 215,81 seconds of normal activity (label 1) and 3849,5 of seizure activity (label 2). No additional filters have been applied to any of the datasets, apart from the anti-aliasing filter applied by the equipment used to record the University of Bonn and HRUCH datasets. To address the different frequency rates that range from 173.6 to 511.99 Hz, all of the datasets are automatically resampled at 173.6 Hz, the frequency of the training set.

5.2. Qualitative analysis of the data

PCA projection of the data are computed and represented in Figures from 6a to 6d to graphically demonstrate that the data from different datasets (i.e., the different modalities present in the data, in different colors) are not linearly separable. Figure 7b shows the same projection but now differentiating the healthy and epileptic samples. Only two dimensions are represented to facilitate human visual interpretation of the data. Although these figures are only indicative because no PCA is actually performed by the classifier, it gives an indication of the distribution of both the input feature space and the BoW transformed feature space.

It can be noticed that the data and modalities seem hard to separate with linear and simple classifiers in the original space, while non-linear separation using kernels may give better results. We also provide the representation of the resulting data after the BoW has been applied and how it linearizes the space, simplifying the separation process performed by the classifier.

5.3. Clustering evaluation

The first implementation decision to be evaluated is the clustering methodology to be applied to generate the codebook. Both k-means and EM were evaluated on the 3 testing sets (Bonn, Freiburg and HRUCH). The empirical results confirm clearly the theoretical advantage of using EM instead of k-means (see Figure 8).

Since EM relies on a stochastic process to initialize the clustering process, an experiment was performed to evaluate the impact that the selected initial cluster might have in the overall performance of the system. Quantitative experiments in section 5.5 were repeated 10 times for the BoW approach (SVM-only approaches do not use the clustering) for sets A and E and the standard deviation (STD) between experiments was measured (see Table 5). The average standard deviation (STD) is 0.0044 for BoW, which represents an almost negligible influence of this initialization on the final performance of the system.

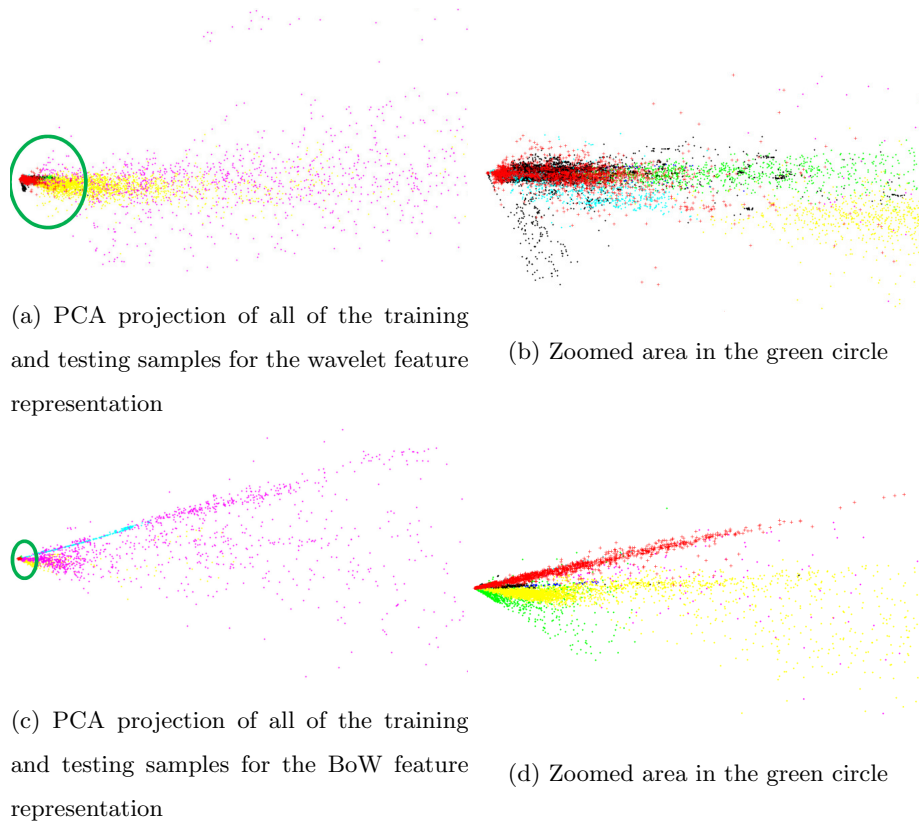


Figure 6: PCA projection of all of the training and testing samples into the 2 most significant PCA dimensions for the (a,b) wavelet feature and (c,d) BoW feature representation. The right column shows a zoom of the area in the green circle. Color-dataset correspondence legend: red dot=A, green=E, blue=F, black=G, cyan=H, yellow=I, magenta=J, red cross=K

545 *5.4. Window size evaluation*

Another parameter that must be verified is the size of the signal segment or epochs into which the EEG channels have been split. The 3-seconds window size has been empirically demonstrated by analyzing the performance of the system under different window sizes. The following graphics summarizes the variations in the accuracy rate, which were experienced by varying the size of the sliding window, from two-second windows to five-second windows. For the purpose of conciseness, only the SVM and BoW implementation of the RBF kernel is presented in this paper. Because it will be justified later, on average,

550

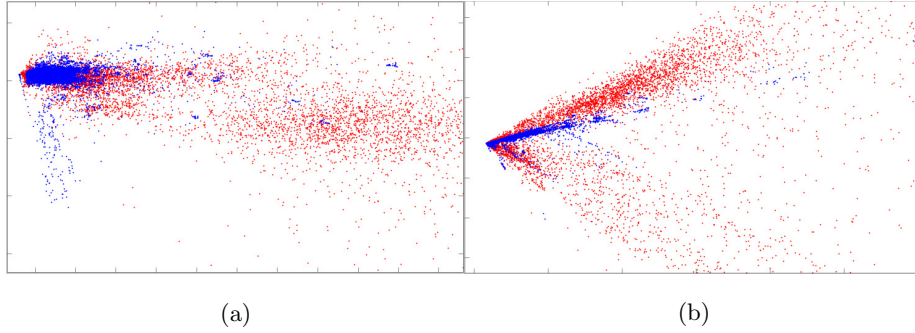


Figure 7: PCA projection of all of the training and testing samples (zoom versions in Figure 6) into the 2 most significant PCA dimensions for the a) wavelet feature and b) BoW feature representation. Blue indicates healthy samples, while red indicates seizure samples

Table 5: Standard deviation for accuracy results after 10 iterations

STD for BoW		
	A SET	E SET
No D1 band	0,0002635	0,00932274
Quadratic kernel	0	0,00811947
Polynomial kernel	0,00035136	0,00403399
RBF kernel	0,00035136	0,00901815
Perceptron kernel	0,0002635	0,01237935

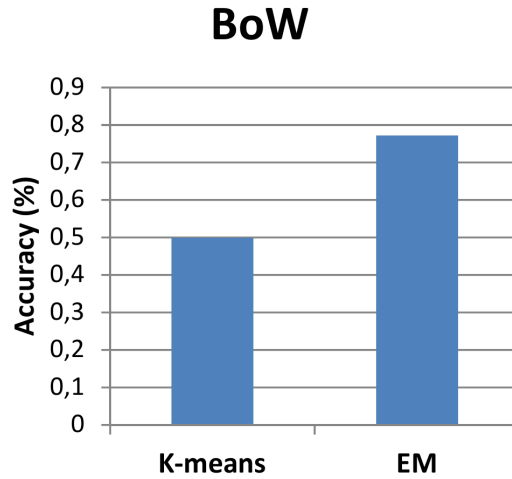


Figure 8: Average accuracy rate obtained by BoW over the whole testing set (A to K) by using K-means and EM clustering

the RBF kernel provides better results than any of the other implementations,
 555 and for that reason, only its value is represented here.

Figure 9 summarizes the accuracy rates that are obtained by systems testing
 the different sets considered here. Although the results are not totally conclu-
 sive, it can be observed that the maximums are normally achieved in 3 or 4
 seconds. This timing is especially notable for sets A and E, where a maximum
 560 accuracy rate of 100% is achieved.

5.5. Quantitative results

An exhaustive evaluation of each of the proposed methods -with and without
 BoW, with and without different non-linear kernels- was performed. The accu-
 racies of the classification results obtained for different experiments are depicted
 565 in Table 6. Since the models are trained using half of the A and E datasets,
 first and fifth lines in the table can be considered intra-dataset while all others
 are cross-dataset experiments. Parameters are kept the same for all datasets.

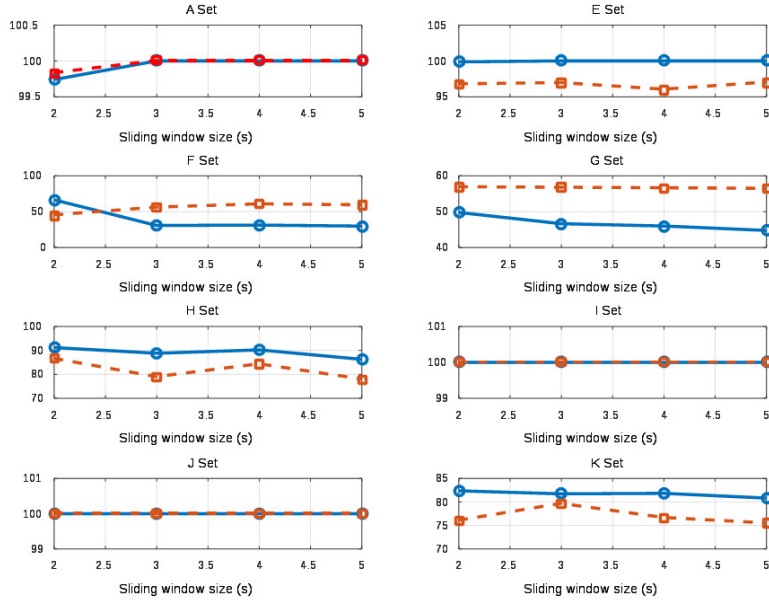


Figure 9: Classification accuracy evolution with the sliding window size, for tested size values of 2, 3, 4 and 5 seconds. The solid blue line represents the SVM-only system results, and the dashed green line represents the BoW+SVM system results

Table 6: Accuracy results for the different experiments that were conducted

System	BoW(%)	BoW (%)	BoW (%)	BoW (%)	BoW(%)	SVM(%)	SVM (%)	SVM (%)	SVM (%)	SVM (%)
Set \ Kernel	Linear (dot product)	Quadratic	Polynomial order 3	RBF	Perceptron	Linear (dot product)	Quadratic	Polynomial order 3	RBF	Perceptron
A	100,00%	100,00%	100,00%	100,00%	82,00%	100,00%	100,00%	100,00%	100,00%	82,00%
B	93,00%	93,00%	89,00%	93,00%	98,00%	79,00%	78,00%	78,00%	77,00%	98,00%
C	99,00%	98,00%	98,00%	98,00%	71,00%	90,00%	91,00%	92,00%	92,00%	71,00%
D	86,00%	79,00%	84,00%	86,00%	75,00%	78,00%	50,00%	80,00%	80,00%	75,00%
E	95,00%	96,00%	100,00%	97,00%	79,00%	100,00%	100,00%	100,00%	100,00%	79,00%
F	70,00%	73,00%	77,00%	73,00%	78,00%	75,00%	73,00%	72,00%	72,00%	78,00%
G	93,00%	59,00%	66,00%	58,00%	82,00%	22,00%	30,00%	36,00%	44,00%	82,00%
H	84,00%	80,00%	27,00%	84,00%	24,00%	46,00%	31,00%	42,00%	87,00%	24,00%
I	100,00%	93,00%	29,00%	100,00%	100,00%	100,00%	88,00%	87,00%	100,00%	88,00%
J	99,00%	91,00%	33,00%	100,00%	100,00%	98,00%	47,00%	99,00%	100,00%	100,00%
K	73,00%	77,00%	26,00%	81,00%	31,00%	41,00%	41,00%	19,00%	80,00%	31,00%
Mean	90,21%	85,35%	66,26%	88,15%	74,57%	75,35%	66,10%	73,12%	84,72%	73,46%

6. Discussion

Several conclusions can be observed from Table 6. First, we can see how BoW
570 drastically improves the accuracy of the system, on average and for each set,
with regard to the equivalent model of SVM. This improvement is because the
BoW strategy creates a more discriminative space in which the classification can
be performed, while focusing on the key features. This arrangement is shown in
Figure 6, where all of the positive and negative samples of all (A to K) datasets
575 are projected into the 2 most significant dimensions of a PCA space.

Second, a similar accuracy to BoW can be obtained with a more conventional
approach and a careful selection of non-linear classifiers in the same feature
space. This approach gives lower, but similar, accuracy on average and provides
some of the best possible accuracies on the individual sets (E, J, H). The good
580 performance of the RBF kernels, especially in the SVM version, is supported
theoretically because of the fact that if the kernel used is a Gaussian RBF, then
the resulting feature space is a Hilbert space that has an infinite dimension.
In this space, our maximum margin classifiers are well regularized and large
or even infinite dimensions do not spoil the results, which mitigates the curse
585 of dimensionality. However, it is important to note that there is a drop in
SVM-RBF performance with respect to some of the noisiest datasets (G). This
drop could suggest the convenience of the BoW approach for addressing the
(considerably) more difficult conditions.

Moreover, the use of non-linear classifiers for BoW methods is revealed to be
590 unnecessary because similar results are obtained for all of the possible kernels,
except for the 3rd-order polynomial approach, in which overfitting to the train-
ing seems to have happened. This redundancy occurs because BoW has already
reduced significantly the dimensionality and non-linearity of the feature space
as shown in Figure 7b and makes the use of non-linear kernels in the classifier
595 redundant. This is a significant advantage since selecting a suitable kernel is
not trivial and relies largely on empirical tuning as shown in Burges (1998) and
in our own exhaustive experiments.

Table 7: Accuracy means for A and E sets

System	BoW(%)	BoW (%)	BoW (%)	BoW (%)	BoW(%)	SVM(%)	SVM (%)	SVM (%)	SVM (%)	SVM (%)
Set \ Kernel	Linear (dot product)	Quadratic	Polynomial order 3	RBF	Perceptron	Linear (dot product)	Quadratic	Polynomial order 3	RBF	Perceptron
Mean A and E sets	97,59%	98,09%	99,84%	98,38%	80,60%	99,84%	100,00%	100,00%	100,00%	80,60%

In the overall and considering all datasets and the cross-dataset setup, comprising different variations and artifacts, it can be observed how the BoW method combined with an SVM classifier with a linear kernel yields a mean accuracy of 90,21%.

BoW implementation provides the best results on average when compared to the equivalent linear or non-linear SVM implementation. The robust performance of the BoW implementation when facing these types of realistic EEG signals suggests the suitability of this model for deployment in real hospital environments. This is justified by the success of BoW in creating a more discriminative and linear space in which the classification of the EEG data can be better performed. The use of BoW also avoids the non-trivial selection of a kernel and parameter tuning that is required in the SVM classifier.

6.1. Comparison with the state of the art

Two different comparison with state-of-art methods were performed. In the first comparison, results reported by state-of-art methods on the public A and E dataset are compared against or best performing methods. These dataset are the most widely used in the literature and for that reason they are commonly used as reference framework Chen (2014). Our best performing methods were chosen by selecting a BoW and a non-linear SVM systems from Table 7, which summarizes the accuracy rates obtained for the different techniques when applied only to sets A and E.

Table 8 compares the accuracy results that are obtained from state-of-the-art methods with the ones in Table 7 for sets A and E (normal and ictal activity) according to the reported results in their corresponding papers. Different approaches are implemented by the studies listed in this table, such as Neural

Table 8: Comparative analysis with previous work using the University of Bonn Dataset (CV: cross validation)

Reference	Accuracy (%)	Training/testing Setup
Polat and Gulness Polat & Güneş (2007)	98.72	5 and 10 fold CV
Guo et al. Guo et al. (2009)	99.6	50-50
Wang et al. Wang et al. (2012)	99.5	10 fold CV
Janjarasjitt et al. Janjarasjitt (2010)	99.0	66-33
Husain et al. Husain & Rao (2012)	98.2	60-40
Fathima et al. Fathima et al. (2011)	99.8	66-33
Chen et al. Chen (2014)	100	50-50
Übeyli Übeyli (2010)	94.83	50-50
This work: BoW + SVM	99.85	50-50
Non-linear SVM (RBF kernel)	100	

Networks, Wavelet analysis, or a different implementation of the BoW model Wang et al. (2012). From the observed data, it can be concluded that the current
625 implementation using both systems, BoW and SVM, achieves state-of-the-art performance.

Although these results are important as a reference against the state of the art, there are some limitations in this comparison. First, different authors used different experimental setups and training/testing splits, which makes those
630 numbers not directly comparable. In this regard, in order to measure the impact that both the training/testing split and the particular subset selected for training may have in the final results, an additional experiment was carried out, in which the training and testing configuration is modified. A leaving-10%-out cross validation approach was implemented in which the experiment was run
635 10 times. With the obtained accuracy, the STD was calculated, obtaining a mean value of $7.3483e-04$ ($\pm 0.07\%$) for the BoW and $2.2631e-04$ ($\pm 0.02\%$) for the SVM. This variation may imply a crucial difference between being the best

performing method or not.

As a second limitation, this single dataset only contains a type of variation
640 in the epileptic activity, which implies a simple problem and explains the high
accuracy rates obtained. Finally, since authors only report results on these
datasets or retrain for each dataset, there is a risk of overfitting which means
that the reported result may be artificially high and not a true reflection of
the real performance. Very little discussion, if any, is provided on those papers
645 regarding the required tuning of these methods and their parameters to reach
those results. This issue also arises in the adjustment of our proposed methods,
since by selecting the best methods for A and E datasets in Table 7 we are not
necessarily taking the best overall method 6, and their performance will drop
when evaluated under more challenging conditions: Bow+Polynomial kernel
650 drops from 99.84% to 66.26% and the SVM-RBF drops for 100% to 84.72%.

In order to provide a better and more reliable comparison, a new set of ex-
periments was performed in which some representative and up-to-date works
of the state of the art have been implemented and evaluated in the same ex-
perimental setup, including cross-dataset evaluation, and in more complex and
655 realistic datasets with the presence of noise and artifacts. No other state-of-the-
art methods have been tested under those conditions, and few have followed our
approach of training with a completely different dataset from the testing one.
This testing strategy proves the robustness of our methods against different
patients, capturing device-related and environmental changes.

660 We have selected four of the most representative works of the state of the
art. The method “DTCWT+SVM” Chen (2014) proposed the use of a novel
approach based on the use of a dual-tree complex wavelets (DTCWT) com-
bined with an SVM classifier. The method labelled PE+SVM Li et al. (2014)
employs permutation entropy and an SVM classifier to explore changes in the
665 EEG. The method labelled as DWT+KNN Guo et al. (2011) applies genetic
programming to a reduced dimension feature vector obtained after a discrete
wavelet transform (DWT) with the purpose of improving the discriminative per-
formance of K-nearest neighbor (KNN) classifier. Finally, the method labelled

Table 9: Comparative analysis with previous work using the complete dataset space employed in this work

Method \ Set	A-E sets (University of Bonn dataset)				FGHK sets (HRUCH dataset)				IJ sets (Freiburg dataset)			
	Acc	Prec	Recall	F1	Acc	Prec	Recall	F1	Acc	Prec	Recall	F1
BoW+SVM	94.68%	70.06%	94.00%	80.29%	81.64%	79.24%	74.49%	76.79%	99.12%	100.00%	99.38%	99.69%
DTCWT+SVM Chen (2014)	83.60%	57.26%	71.00%	63.39%	60.37%	100.00%	20.78%	34.41%	42.14%	100.00%	41.18%	58.33%
PE+SVM Li et al. (2014)	70.93%	11.36%	14.33%	12.68%	40.26%	45.81%	64.99%	53.74%	8.41%	100.00%	6.42%	12.07%
DWT+KNN Gao et al. (2011)	91.00%	52.91%	100.00%	69.20%	68.02%	82.89%	52.40%	64.21%	100.00%	100.00%	100.00%	100.00%
DWT+ANN Tzallas et al. (2007)	90.55%	51.68%	100.00%	68.14%	72.34%	96.59%	44.23%	60.68%	98.65%	100.00%	99.17%	99.58%

as DWT+ANN Tzallas et al. (2007, 2009) proposes the use of time-frequency
670 distributions with an artificial neural network (ANN) classifier. Since no im-
plementation was provided by the authors, we implemented them keeping their
parameter setting and configuration as closed as possible to their specifications.
Whenever there were missing details regarding the implementation, the configu-
ration details of our system were adopted to ensure a fair comparison. Similarly,
675 the experimental setup and training/testing split used is identical for all com-
pared methods. Training was performed using half of the segments in A and E
datasets, whereas testing was carried out on all other segments and datasets.

Table 9 presents the obtained results for all the datasets used in this work,
including our private datasets. Accuracy (Acc), precision (Prec), recall and F-
680 measure (F1) are used as evaluation metrics. Table 10 summarizes the mean
F1-measure obtained for each of the evaluated methods across the three different
datasets.

From the obtained results, it can be concluded that our method outperforms
the other methods in almost all cases, with the exception of the Freiburg dataset,
685 in which the results obtained are very similar to the best result reported in
literature. However, the excellent performance of all methods when using the
Freiburg dataset, which only contains intracranial ictal (positive) segments,
may indicate the simplicity of this set and/or the particularities of intracranial
ictal cases. By considering all dataset together (see Table 10), we can conclude
690 that our method is more reliable and robust since it does not depend on the
characteristics of the signal to be classified (intracranial or scalp, noisy or
noise-free and with artifacts or artifact-free).

Table 10: Mean F1-measure for the evaluated methods

Method	Mean F1-measure	Standard Deviation
BoW+SVM (Ours)	85,59 %	12,33 %
DTCWT+SVM Chen (2014)	52,04%	15,47 %
PE+SVM Li et al. (2014)	26%	23,88 %
DWT+KNN Guo et al. (2011)	77,80%	19,38 %
DWT+ANN Tzallas et al. (2007)	76,13%	20,64 %

6.2. Computational efficiency

Regarding the computational cost (see Figure 10), BoW reduces the feature vector dimension and makes it easier to obtain convergence of the classifier, which results in a lower training computational cost, and the effect is more noticeable when the number of available samples increases. Both systems have equivalent testing costs.

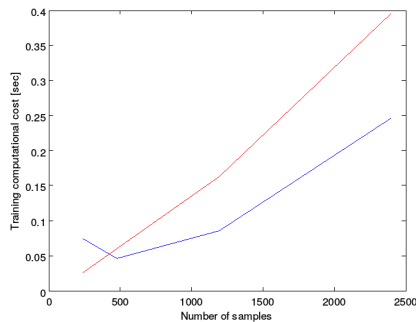


Figure 10: Training time of BoW+LinearSVM (blue) and SVM-RBF (red) systems and their trend with the number of training samples

7. Conclusions

This work presents two systems for the automatic analysis of EEG recordings, which aim toward epilepsy seizure detection. As the first contribution, one of the proposed systems consists of a non-linear implementation of a Support Vector Machine (SVM) classifier that makes use of well-known techniques to optimize the feature extraction and learned classification model. The second contribution is inspired by a successful model for Natural Language Understanding and Computer Vision, known as Bag-of-Words (BoW), which is adapted to the field and added into the framework. In this sense, this work was supported by the premise that an extrapolation

tion of that model to EEG analysis for epilepsy seizure detection could improve
715 the existing accuracy rates. The methodology presented here proposes a novel
combination of well-known techniques such as sliding windows, wavelet signal
decomposition, statistical operations over wavelet coefficients, and the use of
different classifier kernels in the field of EEG analysis.

The proposed systems were validated in a wide spectrum of data, includ-
720 ing public standard datasets and complex private datasets, in which different
type of activities, noise and artifacts appear. For instance, a dataset consists
of intracranial data that is characterized by high-amplitude signals with low
noise, and a different dataset was obtained from a real scenario, in which the
EEG signals that were recorded from the scalps were considerably attenuated.
725 Evaluation was performed focusing on cross-dataset experiments, in which the
system is trained on the standard public set and evaluated in the other without
adaptation or tuning. The main reason is to demonstrate that accurate results
were not dependent on which dataset was used to train the system and the
reported results are a better reflection of the performance in realistic scenarios.

730 Our proposed system performs at state-of-art level when evaluated in stan-
dard datasets under an intra-dataset setup. More importantly, cross-dataset
experiments have been used to evaluate the performance of the proposed BoW
approach against some of the most relevant and representative state-of-the-art
methods for all the datasets considered in this work. The results prove the ro-
735 bustness of our method to input data and they suggest that more complex and
non-linear techniques as well as thorough evaluation methodologies are required
in the field of EEG analysis.

The clinical implications of having a reliable system for epilepsy diagnosis are
related to the diagnosis stage. This first stage represents a bottleneck because it
740 requires from a neurophysiologist going through the EEG logs that should ide-
ally record as much cerebral activity as possible to increase the probability of
recording seizure occurrences. This is a tedious and resource consuming activ-
ity, which requires very advanced training and experience. Moreover, according
to the neurologist office of the HRUCH, approximately 50% of people attended

745 in their offices, regardless of presenting epilepsy symptoms, are afterwards diagnosed as non-epileptic. The bottleneck is therefore in the analysis of the EEG, that

As future work we aim to evaluate our system for automatic analysis of long EEG test, such as those of sleep deprivation, which currently relies on specialists
750 supervising the testing results. This will require the introduction of time-series modeling in the BoW representation since our current implementation of BoW fails to represent the underlying temporal and causal information that is inherent to time series such as EEG signals and that may be needed to detect more complex and subtle neural activity. Additionally, due to the computational
755 efficiency of the proposed method, we will work on the implementation of a hardware-specific version of the algorithm for FPGAs.

Acknowledgment

This work has been partly funded by the Spanish Ministry of Economy and Competitiveness under project REBECCA (TEC2014-58036-C4-1-R), by the
760 Regional Government of Castilla-La Mancha under project SAND (PEII.2014.046.P) and by the University of Castilla-La Mancha R&D Plan under the access contracts to the Spanish system of science, technology and innovation call, which is partially funded by the European Social Fund (31/07/2014 Resolution, published in the DOCM on the 25 of August 2014).

765 References

- Acharya, U. R., Fujita, H., Sudarshan, V. K., Bhat, S., & Koh, J. E. (2015). Application of entropies for automated diagnosis of epilepsy using EEG signals: A review. *Knowledge-Based Systems*, 88, 85 – 96.
- Acharya, U. R., Sree, S. V., & Suri, J. S. (2011a). Automatic detection of epileptic eeg signals using higher order cumulant features. *International Journal of
770 Neural Systems*, 21, 403–414.

- Acharya, U. R., Vinitha Sree, S., Chattopadhyay, S., & Yu, A. P. C.,
W.and Alvin (2011b). Application of recurrence quantification analysis for
the automated identification of epileptic eeg signals. *International Journal of*
775 *Neural Systems*, 21, 199–211.
- Adeli, H., Zhou, Z., & Dadmehr, N. (2003a). Analysis of EEG records in an
epileptic patient using wavelet transform. *Journal of Neuroscience Methods*,
123, 69 – 87.
- Adeli, H., Zhou, Z., & Dadmehr, N. (2003b). Analysis of eeg records in an
780 epileptic patient using wavelet transform. *Journal of neuroscience methods*,
123, 69–87.
- Alfaro-Ponce, M., Argelles, A., & Chairez, I. (2016). Pattern recognition for
electroencephalographic signals based on continuous neural networks. *Neural*
Networks, 79, 88 – 96.
- 785 Alotaiby, T. N., Alshebeili, S. A., Alshawi, T., Ahmad, I., & Abd El-Samie, F. E.
(2014). Eeg seizure detection and prediction algorithms: a survey. *EURASIP*
Journal on Advances in Signal Processing, 2014, 1–21.
- Andrzejak, R. G., Lehnertz, K., Mormann, F., Rieke, C., David, P., & Elger,
C. E. (2001). Indications of nonlinear deterministic and finite-dimensional
790 structures in time series of brain electrical activity: Dependence on recording
region and brain state. *Physical Review E*, 64, 061907.
- Ataee, P., Avanaki, A. N., Shariatpanahi, H. F., & Khoei, S. M. (2006). Ranking
features of wavelet-decomposed eeg based on significance in epileptic seizure
prediction. In *Signal Processing Conference, 2006 14th European* (pp. 1–4).
- 795 Atyabi, A., Shic, F., & Naples, A. (2016). Mixture of autoregressive modeling
orders and its implication on single trial EEG classification. *Expert Systems*
with Applications, 65, 164 – 180.

- Auria, L., & Moro, R. A. (2008). *Support Vector Machines (SVM) as a Technique for Solvency Analysis*. Discussion Papers of DIW Berlin 811 DIW
800 Berlin, German Institute for Economic Research.
- Bao, F. S., Lie, D. Y.-C., & Zhang, Y. (2008). A New Approach to Automated Epileptic Diagnosis Using EEG and Probabilistic Neural Network. In *Proceedings of the 2008 20th IEEE International Conference on Tools with Artificial Intelligence - Volume 02 ICTAI '08* (pp. 482–486). Washington, DC, USA:
805 IEEE Computer Society.
- Bhardwaj, A., Tiwari, A., Krishna, R., & Varma, V. (2016). A novel genetic programming approach for epileptic seizure detection. *Computer Methods and Programs in Biomedicine*, *124*, 2 – 18.
- Burges, C. J. C. (1998). A Tutorial on Support Vector Machines for Pattern
810 Recognition. *Data Min. Knowl. Discov.*, *2*, 121–167.
- Chen, G. (2014). Automatic eeg seizure detection using dual-tree complex wavelet-fourier features. *Expert Syst. Appl.*, *41*, 2391–2394.
- Cheng, Z., Qin, L., Huang, Q., Jiang, S., & Tian, Q. (2010). In *Pattern Recognition (ICPR), 2010 20th International Conference on* (pp. 3228–3231).
- 815 Chua, K. C., Chandran, V., Acharya, R., & Lim, C. M. (2008). Automatic identification of epilepsy by hos and power spectrum parameters using eeg signals: A comparative study. In *2008 30th Annual International Conference of the IEEE Engineering in Medicine and Biology Society* (pp. 3824–3827). doi:10.1109/IEMBS.2008.4650043.
- 820 Chua, K. C., Chandran, V., Acharya, U. R., & Lim, C. M. (2011). Application of higher order spectra to identify epileptic eeg. *Journal of Medical Systems*, *35*, 1563–1571.
- Cristianini, N., & Shawe-Taylor, J. (2000). *An Introduction to Support Vector Machines: And Other Kernel-based Learning Methods*. New York, NY, USA:
825 Cambridge University Press.

- Direito, B., Teixeira, C., Bandarabadi, M., Sales, F., & Dourado, A. (2014). Automatic warning of epileptic seizures by SVM: the long road ahead to success. *IFAC Proceedings Volumes*, *47*, 1158 – 1163. 19th IFAC World Congress.
- 830 Echauz, J., Wong, S., Smart, O., Gardner, A., Worrell, G., & Litt, B. (2008). Computation Applied to Clinical Epilepsy and Antiepileptic Devices. In I. Soltesz, & K. Staley (Eds.), *Computational Neuroscience in Epilepsy* (pp. 530 – 558). San Diego: Academic Press.
- 835 Fathima, T., Bedeuzzaman, M., Farooq, O., & Khan, Y. U. (2011). Wavelet based features for epileptic seizure detection. *MES Journal of Technology and Management*, *2*, 108 – 112.
- Faust, O., Acharya, U. R., Adeli, H., & Adeli, A. (2015). Wavelet-based EEG processing for computer-aided seizure detection and epilepsy diagnosis. *Seizure*, *26*, 56 – 64.
- 840 Figueiredo, M. A. T., & Jain, A. K. (2002). Unsupervised learning of finite mixture models. *IEEE Transactions on Pattern Analysis and Machine Intelligence*, *24*, 381–396.
- Gilbert, A., Illingworth, J., & Bowden, R. (2009). Fast realistic multi-action recognition using mined dense spatio-temporal features. In *2009 IEEE 12th International Conference on Computer Vision* (pp. 925–931).
- 845 Gotman, J. (1982). Automatic recognition of epileptic seizures in the EEG. *Electroencephalography and Clinical Neurophysiology*, *54*, 530 – 540.
- Gotman, J. (1990). Automatic seizure detection: improvements and evaluation. *Electroencephalography and Clinical Neurophysiology*, *76*, 317–324.
- 850 Guo, L., Rivero, D., Dorado, J., Munteanu, C. R., & Pazos, A. (2011). Automatic feature extraction using genetic programming: An application to epileptic eeg classification. *Expert Syst. Appl.*, *38*, 10425–10436. URL:

<http://dx.doi.org/10.1016/j.eswa.2011.02.118>. doi:10.1016/j.eswa.2011.02.118.

- 855 Guo, L., Rivero, D., Seoane, J. A., & Pazos, A. (2009). Classification of eeg signals using relative wavelet energy and artificial neural networks. In *Proceedings of the first ACM/SIGEVO Summit on Genetic and Evolutionary Computation* (pp. 177–184).
- Husain, S. J., & Rao, K. S. (2012). Epileptic Seizures Classification from EEG
860 Signals using Neural Networks. In *International Proceedings on Computer Science and Information Technology* (pp. 269–273). volume 37.
- Jain, A. K., Murty, M. N., & Flynn, P. J. (1999). Data clustering: A review. *ACM Comput. Surv.*, *31*, 264–323.
- Janjarasjitt, S. (2010). Classification of the epileptic eegs using the wavelet-
865 based scale variance feature. *International Journal of Applied Biomedical Engineering*, *3*, 43–50.
- Joachims, T. (1997). *Text Categorization with Support Vector Machines: Learning with Many Relevant Features*. Technical Report 23 Universität Dortmund, LS VIII-Report.
- 870 Kandaswamy, A., Kumar, C., Ramanathan, R., Jayaraman, S., & Malmurugan, N. (2004). Neural classification of lung sounds using wavelet coefficients. *Computers in Biology and Medicine*, *34*, 523 – 537.
- Kanungo, T., Mount, D. M., Netanyahu, N. S., Piatko, C. D., Silverman, R., & Wu, A. Y. (2002). An efficient k-means clustering algorithm: Analysis and
875 implementation. *IEEE Trans. Pattern Anal. Mach. Intell.*, *24*, 881–892.
- Kıymık, M. K., Güler, I., Dizibüyük, A., & Akın, M. (2005). Comparison of stft and wavelet transform methods in determining epileptic seizure activity in eeg signals for real-time application. *Computers in biology and medicine*, *35*, 603–616.

- 880 Li, J., Yan, J., Liu, X., & Ouyang, G. (2014). Using permutation entropy to measure the changes in eeg signals during absence seizures. *Entropy*, *16*, 3049. URL: <http://www.mdpi.com/1099-4300/16/6/3049>. doi:10.3390/e16063049.
- 885 Martis, R. J., Acharya, U. R., Tan, J.-H., Petznick, A., Tong, L., Chua, C. K., & Ng, E. Y. K. (2013). Application of intrinsic time-scale decomposition (itd) to eeg signals for automated seizure prediction. *International journal of neural systems*, *23* 5, 1350023.
- McLachlan, G. J., & Krishnan, T. (2007). Extensions of the em algorithm. In *The EM Algorithm and Extensions* (pp. 159–218). John Wiley & Sons, Inc.
- 890 N, S., & Thanushkodi, D. K. (2009). Automated Epileptic Seizure Detection in EEG Signals Using FastICA and Neural Network . *International Journal of Soft Computing and Its Applications*, *1*, 1–14.
- Omerhodzic, I., Avdakovic, S., Nuhanovic, A., & Dizdarevic, K. (2013). Energy distribution of EEG signals: EEG signal wavelet-neural network classifier. 895 *CoRR*, *abs/1307.7897*.
- Organization, W. H. (2016). Epilepsy Fact sheet, number 999. URL: <http://www.who.int/mediacentre/factsheets/fs999/en/>.
- Orhan, U., Hekim, M., & Ozer, M. (2011). EEG signals classification using the k-means clustering and a multilayer perceptron neural network model. 900 *Expert Systems with Applications*, *38*, 13475 – 13481.
- Patnaik, L., & Manyam, O. K. (2008). Epileptic EEG detection using neural networks and post-classification. *Computer Methods and Programs in Biomedicine*, *91*, 100 – 109.
- Pippa, E., Mporas, I., & Megalooikonomou, V. (2015). Automatic estimation of the optimal ar order for epilepsy analysis using eeg signals. In *Bioinformatics and Bioengineering (BIBE), 2015 IEEE 15th International Conference on* (pp. 1–4). 905

- Polat, K., & Güneş, S. (2007). Classification of epileptiform EEG using a hybrid system based on decision tree classifier and fast Fourier transform. *Applied Mathematics and Computation*, 187, 1017–1026.
- 910
- Ripley, B. D., & Hjort, N. L. (1995). *Pattern Recognition and Neural Networks*. (1st ed.). New York, NY, USA: Cambridge University Press.
- Shoeb, A., Edwards, H., Connolly, J., Bourgeois, B., Treves, T., & Guttag, J. (2004). Patient-specific seizure onset detection. In *Engineering in Medicine and Biology Society, 2004. IEMBS '04. 26th Annual International Conference of the IEEE* (pp. 419–422). volume 1.
- 915
- Siuly, S., & Li, Y. (2015). Designing a robust feature extraction method based on optimum allocation and principal component analysis for epileptic EEG signal classification. *Computer Methods and Programs in Biomedicine*, 119, 29 – 42.
- 920
- Subasi, A., & Erelebi, E. (2005). Classification of EEG signals using neural network and logistic regression. *Computer Methods and Programs in Biomedicine*, 78, 87 – 99.
- Tsiouris, K. M., Tzallas, A. T., Markoula, S., Koutsouris, D., Konitsiotis, S., & Fotiadis, D. I. (2015). A Review of Automated Methodologies for the Detection of Epileptic Episodes Using Long-Term EEG Signals. *Handbook of Research on Trends in the Diagnosis and Treatment of Chronic Conditions*, (pp. 231–261).
- 925
- Tzallas, A. T., Tsipouras, M. G., & Fotiadis, D. I. (2007). Automatic seizure detection based on time-frequency analysis and artificial neural networks. *Intell. Neuroscience*, 2007, 18:1–18:13.
- 930
- Tzallas, A. T., Tsipouras, M. G., & Fotiadis, D. I. (2009). Epileptic seizure detection in eegs using time-frequency analysis. *Trans. Info. Tech. Biomed.*, 13, 703–710.

- 935 Übeyli, E. D. (2010). Least squares support vector machine employing model-based methods coefficients for analysis of eeg signals. *Expert Systems with Applications*, 37, 233–239.
- Upadhyay, R., Padhy, P., & Kankar, P. (2016). A comparative study of feature ranking techniques for epileptic seizure detection using wavelet transform. 940 *Computers & Electrical Engineering*, 53, 163–176.
- Valipour, M. (2012a). Comparison of surface irrigation simulation models: full hydrodynamic, zero inertia, kinematic wave. *Journal of Agricultural Science*, 4, 68.
- Valipour, M. (2012b). Sprinkle and trickle irrigation system design using tapered 945 pipes for pressure loss adjusting. *Journal of Agricultural Science*, 4, 125.
- Valipour, M. (2016). Optimization of neural networks for precipitation analysis in a humid region to detect drought and wet year alarms. *Meteorological Applications*, 23, 91–100.
- Valipour, M., & Singh, V. P. (2016). Global experiences on wastewater irrigation: 950 Challenges and prospects. In *Balanced Urban Development: Options and Strategies for Liveable Cities* (pp. 289–327). Springer.
- Vapnik, V. N. (1995). *The Nature of Statistical Learning Theory*. New York, NY, USA: Springer-Verlag New York, Inc.
- Wang, J., Liu, P., She, M. F., Nahavandi, S., & Kouzani, A. (2013). Bag-of-words 955 representation for biomedical time series classification. *Biomedical Signal Processing and Control*, 8, 634 – 644.
- Wang, J., Liu, P., She, M. F., Nahavandi, S., & Kouzani, A. Z. (2012). Bag-of-words representation for biomedical time series classification. *CoRR*, .
- Wilson, S. B., Scheuer, M. L., Emerson, R. G., & Gabor, A. J. (2004). Seizure 960 detection: evaluation of the reveal algorithm. *Clinical Neurophysiology*, 115, 2280 – 2291.

Winterhalder, M., Maiwald, T., Voss, H., Aschenbrenner-Scheibe, R., Timmer, J., & Schulze-Bonhage, A. (2003). The seizure prediction characteristic: a general framework to assess and compare seizure prediction methods. *Epilepsy & Behavior*, 4, 318–325.

Yannopoulos, S. I., Lyberatos, G., Theodossiou, N., Li, W., Valipour, M., Tamburrino, A., & Angelakis, A. N. (2015). Evolution of water lifting devices (pumps) over the centuries worldwide. *Water*, 7, 5031–5060.